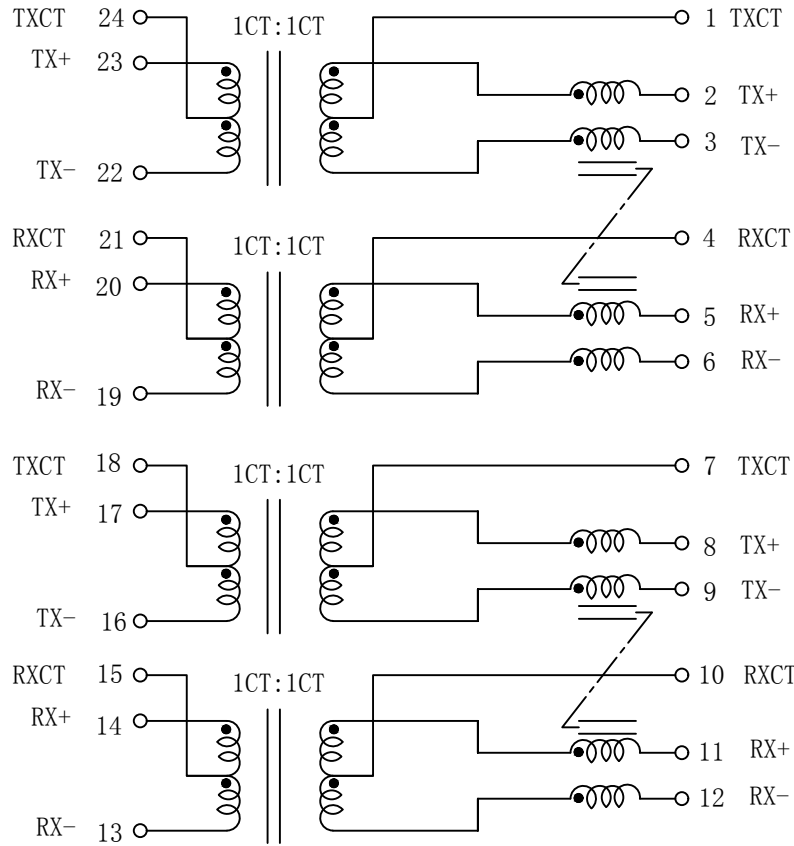


Schematic:

REV.	ECN NO.	DESCRIPTION	DATE	APPD
A	REL		2022-10-27	

Chipset or cable side



Cable or chipset side

Electrical Specifications @25°C

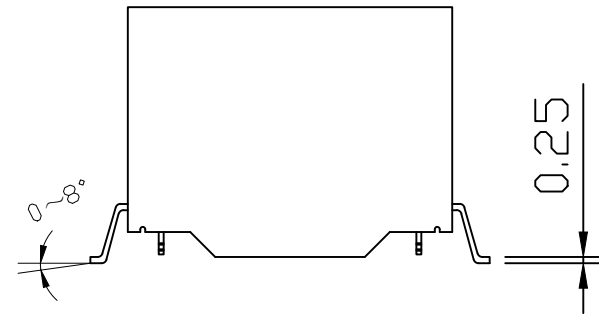
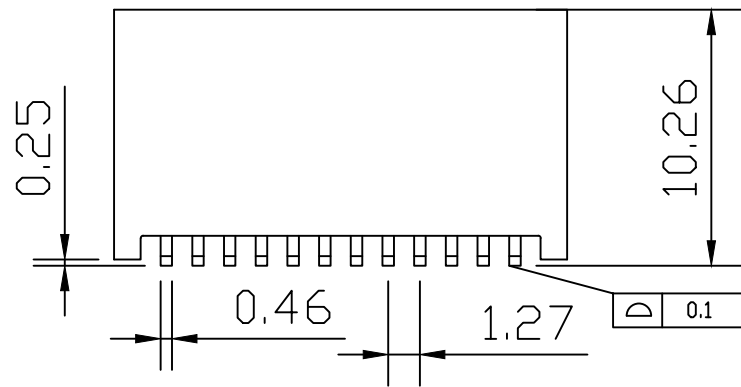
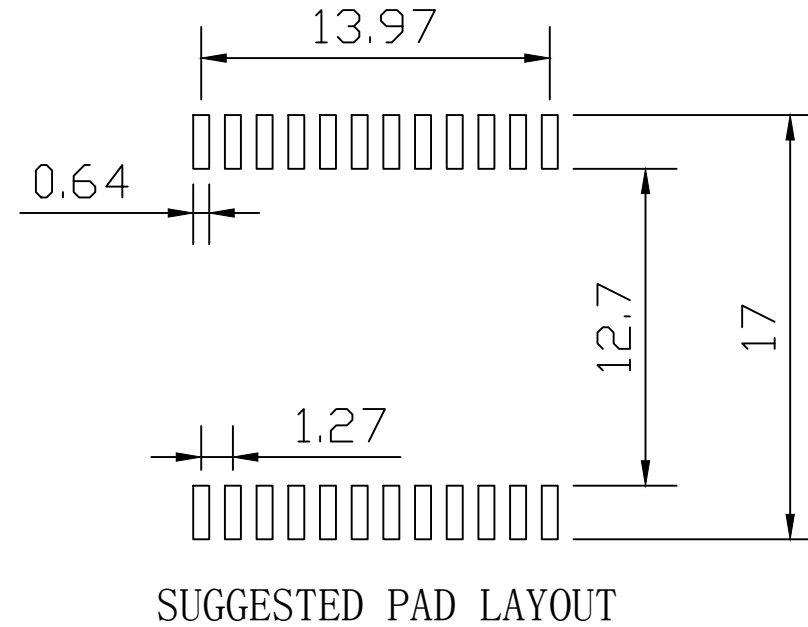
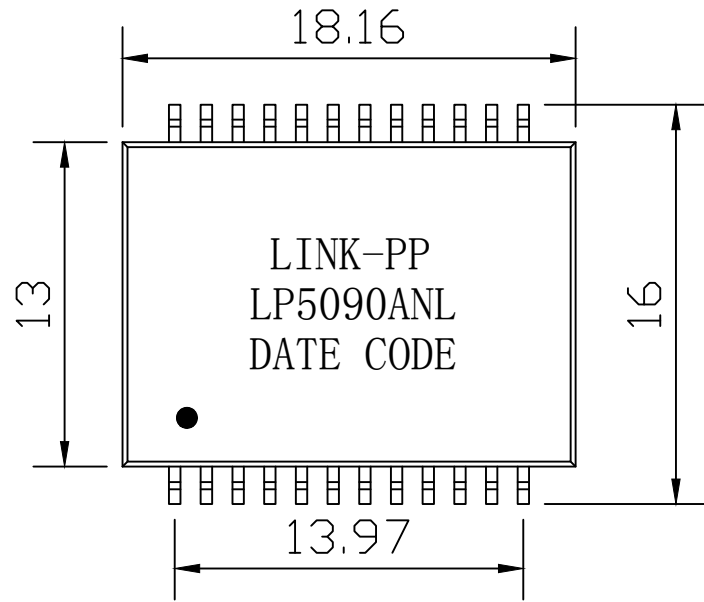
- Turns Ratio: ($\pm 2\%$)
TX = 1CT:1CT RX = 1CT:1CT
- OCL:
350uH MIN @100KHz, 0.1V, 35mA DC Bias
- Insertion Loss(dB Max):
1-125MHz = 1.2
- Return Loss(dB Min):
1-30MHz = -16 40MHz = -14
50MHz = -12 60-80MHz = -10
- Cross Talk(dB Min):
30MHz = -40 60MHz = -35
100MHz = -30
- CMRR(dB Min):
30MHz = -30 60MHz = -30
100MHz = -30
- HI-POT: 1500Vrms
- Operating Temperature: -40°C ~ +85°C.



X:X	APPD:	LINK-PP INT'L TECHNOLOGY CO., LIMITED		
X:XX ±0.25	CHKD:	TITLE: 10/100/1000 Base-T Magnetic Modules For PoE++ Application		
X:XXX	DR: LEO	PART NO.: LP5090ANL		
ANGLES ±1°	UNIT: mm	DWG NO.: LP22102701		
	SCALE: 4/1	SHEET: 2/2	REV: A	

Mechanical :

REV.	ECN NO.	DESCRIPTION	DATE	APPD
A	REL		2022-10-27	



NOTES:

1. Compliant with IEEE 802.3bt standard
2. Power over Ethernet (PoE) Magnetics, 1000mA current capability.
3. The part is RoHS compliant.
4. Maximum reflow temperature is 250°C, 5 Sec.
5. UL Certification: File Number E484635.



X:X	APPD:	LINK-PP INT'L TECHNOLOGY CO., LIMITED
X:XX ±0.25	CHKD:	
X:XXX	DR: LEO	TITLE: 10/100/1000 Base-T Magnetic Modules For PoE++ Application
ANGLES ±1°	UNIT: mm	PART NO.: LP5090ANL
	SCALE: 4/1	SHEET: 2/2
	REV: A	DWG NO.: LP22102701