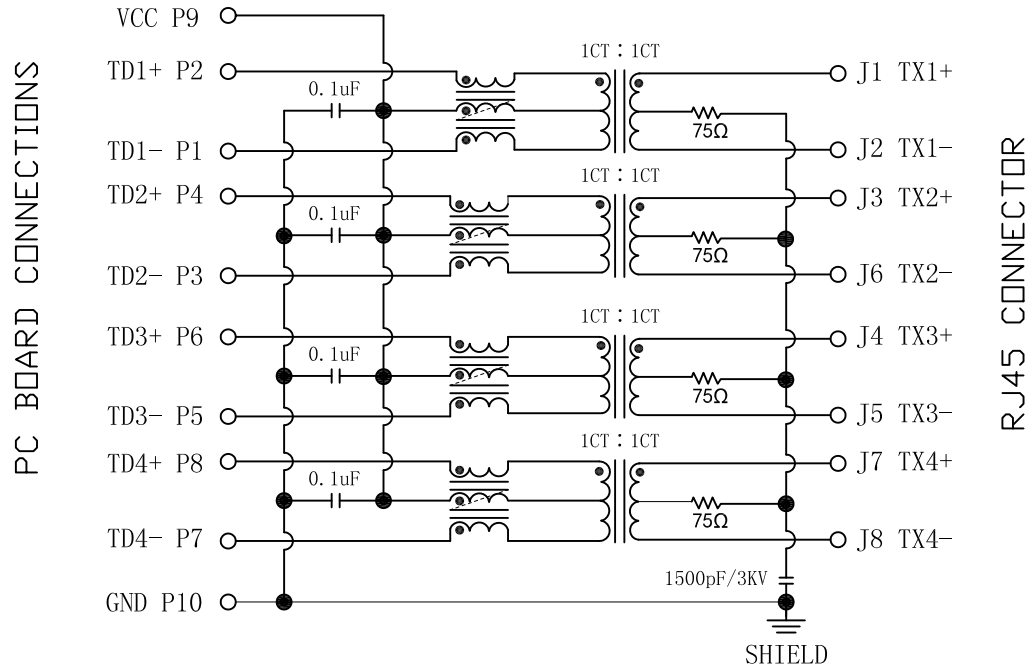


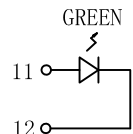
Schematic:

| REV. | ECN NO. | DESCRIPTION | DATE | APPD |
|------|---------|-------------|------------|------|
| A | REL | | 2015/06/18 | |



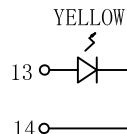
Electrical Specifications @25°C

1. OCL: 350uH Min
@100KHz, 0.1Vrms, 8mA DC Bias.
2. Turns Ratio(±2%): 1CT : 1CT
3. Insertion Loss(dB Max):
0.1-1MHz:-1.1 1-65MHz:-0.5
65-100MHz:-0.8 100-125MHz:-1.2
4. Return Loss(dB Min @100Ω ±15%):
0.5-40MHz:-18
40-100MHz:-12+20LOG(f/80MHz)
5. Crosstalk:
0.1-100MHz:-30dB Min
6. CM to CM Rej:
0.1-100MHz:-30dB Min
7. CM to DM Rej:
0.1-100MHz:-35dB Min
8. Hipot: 1500Vac 60s or 2250Vdc 60s.
9. Operating Temperature: -40°C ~ +85°C.



LEFT LED

| LED POLARITY | | COLOR |
|--------------|--------|-------|
| PIN 11 | PIN 12 | |
| + | - | GREEN |



RIGHT LED

| LED POLARITY | | COLOR |
|--------------|--------|--------|
| PIN 13 | PIN 14 | |
| + | - | YELLOW |

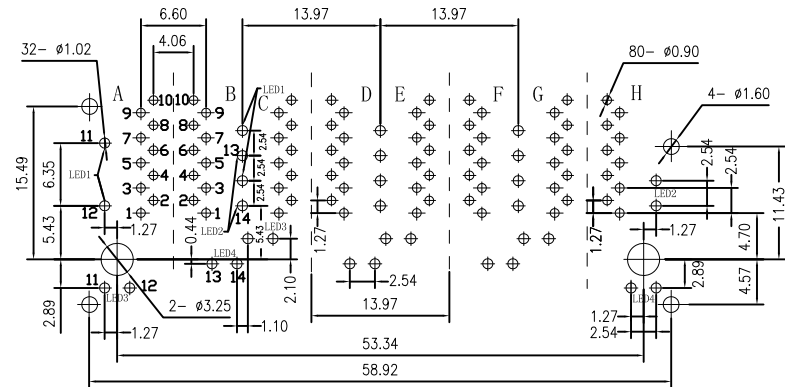
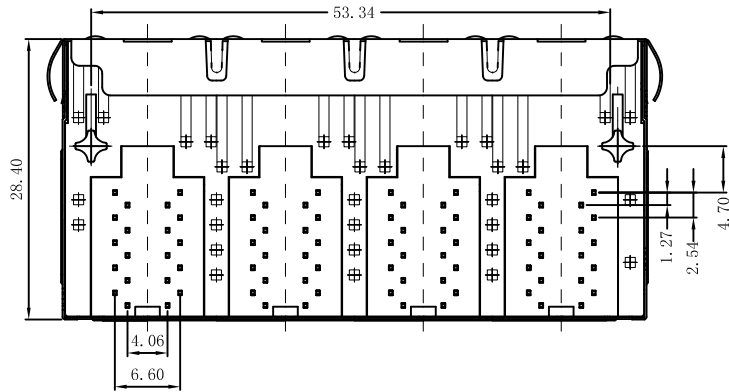
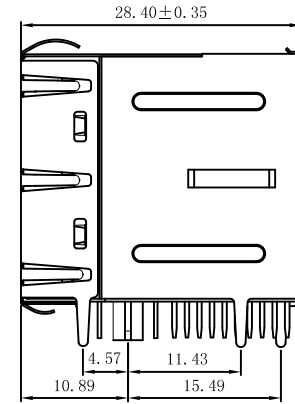
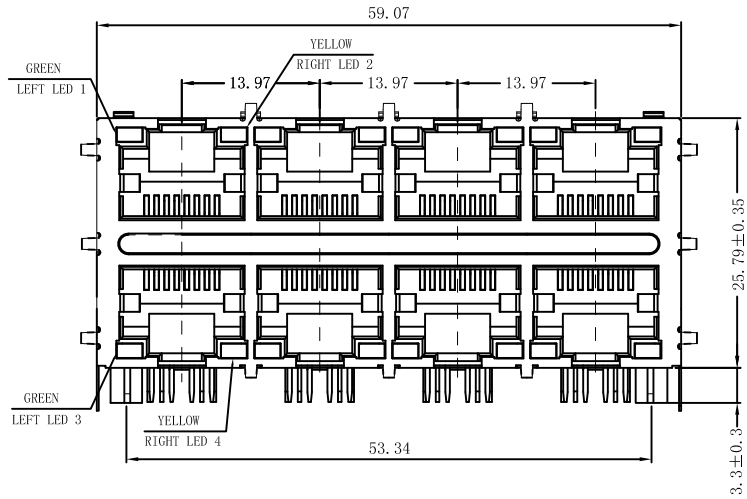


| Emitting Color | λ p(nm) | VF@IF=20mA | IR @VR=5V |
|----------------|---------|------------|------------|
| GREEN | 565 | 1.8~2.6V | 10 μ A max |
| YELLOW | 585 | 1.8~2.6V | 10 μ A max |

| | | | |
|--------|------------|------------|---|
| X:X | ±0.30 | APPD: | LINK-PP LINK-PP INT'L TECHNOLOGY CO., LIMITED |
| X:XX | ±0.25 | CHKD: | |
| X:XXX | ±0.05 | DR: TOM | TITLE: RJ45 .Transformer.1000 Base-T W/LED. 2×4 Port |
| ANGLES | ±1° | UNIT: mm | PART NO. : LPJG47090AENL |
| | SCALE: 2/1 | SHEET: 1/2 | REV: A DWG NO. : LP15061801 |

Mechanical :

| REV. | ECN NO. | DESCRIPTION | DATE | APPD |
|------|---------|-------------|------------|------|
| A | REL | | 2015/06/18 | |



SUGGESTED PCB LAYOUT <TOP VIEW>

NOTES:

1. Designed to support application, such as SOHO (ADSL modems), LAN-on-Motherboard (LOM), hub and Switches.
2. Meets IEEE 802.3 specification
3. Connector Materials:
Housing: Thermoplastic UL94V-0
Contact/Shield: Copper alloy
Shield plating: Nickel
Contact plating: Gold 6 micro-inches min. In contact area.
4. Wave solder tip temperature: 265°C Max, 5 Sec Max.



| | | | |
|--------|------------|------------|---|
| X:X | ±0.30 | APPD: | LINK-PP LINK-PP INT'L TECHNOLOGY CO., LIMITED |
| X:XX | ±0.25 | CHKD: | |
| X:XXX | ±0.05 | DR: TOM | TITLE: RJ45 . Transformer. 1000 Base-T W/LED. 2×4 Port |
| ANGLES | ±1° | UNIT: mm | PART NO. : LPJG47090AENL |
| | SCALE: 2/1 | SHEET: 2/2 | REV: A DWG NO. : LP15061801 |