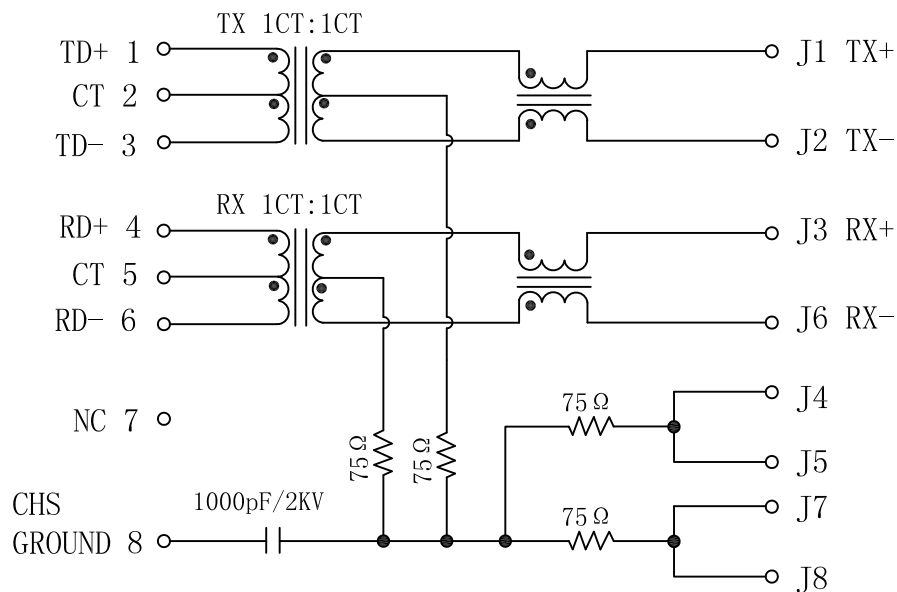


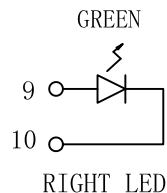
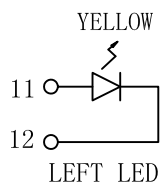
Schematic:

REV.	ECN NO.	DESCRIPTION	DATE	APPD
A	REL		10/11/2009	

PC BOARD CONNECTIONS



RJ45 CONNECTOR



Emitting Color	λ p(nm)	VF@IF=20mA	IR @VR=5V
YELLOW	585	1.8~2.6V	10 μ A max
GREEN	565	1.8~2.6V	10 μ A max



Electrical Specification:

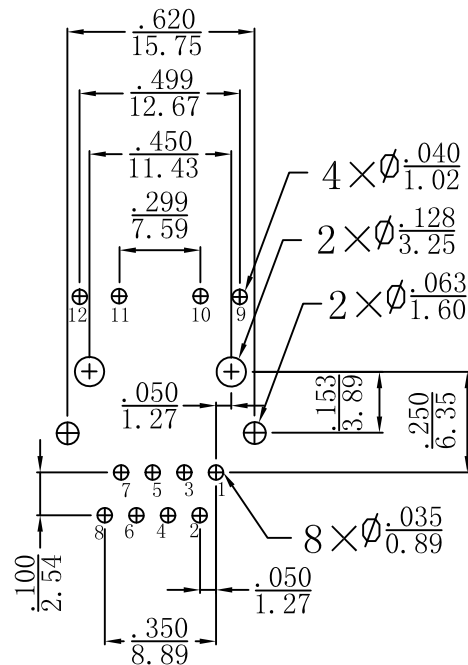
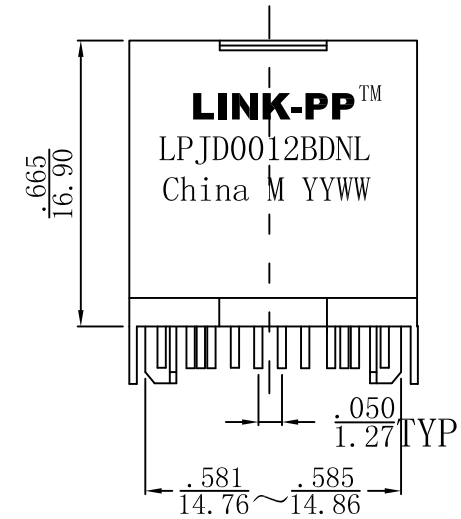
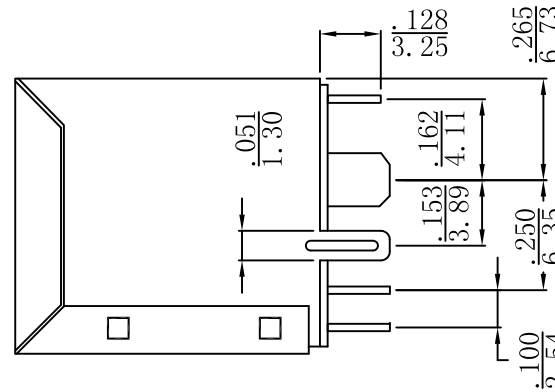
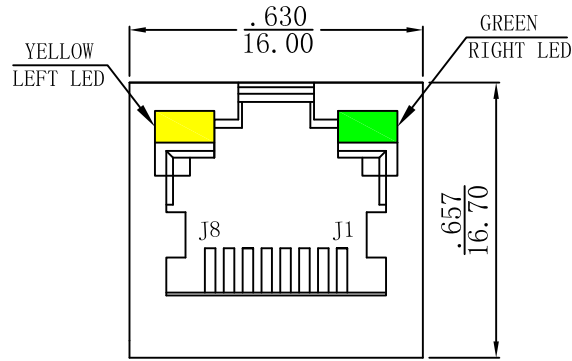
TEST NOTES (25 \pm 5 $^{\circ}$ C)

- TR: (100KHz, 0.1V);
TX=1CT:1CT \pm 2% RX=1CT:1CT \pm 2%
- LX: (100KHz, 100mV, 8mA, DC Bias)
PINS: (P1-P3), (P4-P6)=350uH MIN
- Transmitter filter & Receiver filter Type:
Balance low pass 100 Ω impedance
- Hipot:
Input (P1-P3) TO Output (J1-J2): 1500VAC 60sec
Input (P4-P6) TO Output (J3-J6): 1500VAC 60sec
- Insertion Loss:
-1.0dB MAX @1.0MHz TO 100MHz
- Return Loss:
-18dB MIN @1.0MHz TO 30MHz
-16dB MIN @30MHz TO 60MHz
-12dB MIN @60MHz TO 80MHz
- Cross Talk:
-30dB MIN @1.0MHz TO 100MHz
- Common Mode Rejection:
-30dB MIN @1.0MHz TO 100MHz
- Operating temperature: 0 $^{\circ}$ C to +70 $^{\circ}$ C

X:X	\pm 0.30	APPD:	LINK-PP INT'L TECHNOLOGY CO., LIMITED	
X:XX	\pm 0.25	CHKD:	TITLE: Vertical RJ45 Connector With 10/100 Magnetic	
X:XXX	\pm 0.05	DR: TOM	PART NO: LPJD0012BDNL	
ANGLES	\pm 1 $^{\circ}$	UNIT: Inches/mm		
	SCALE: 2/1	SHEET: 1/2	REV: A	DWG NO: LP09111030

Mechanical:

REV.	ECN NO.	DESCRIPTION	DATE	APPD
A	REL		10/11/2009	



SUGGESTED PCB LAYOUT (TOP VIEW)



NOTES:

1. Designed to support application, such as SOHO (ADSL modems), LAN-on-Motherboard (LOM), hub and Switches.
2. Meets IEEE 802.3 specification
3. Connector Materials:
Housing: Thermoplastic UL94V-0
Contact/Shield: Copper alloy
Shield plating: Nickel
Contact plating: Gold 6 micro-inches min. In contact area.
4. Wave solder tip temperature: 265°C Max, 5 Sec Max.

X:X	±0.30	APPD:	LINK-PP INT'L TECHNOLOGY CO., LIMITED	
X:XX	±0.25	CHKD:	TITLE: Vertical RJ45 Connector With 10/100 Magnetic	
X:XXX	±0.05	DR: TOM	PART NO: LPJD0012BDNL	
ANGLES	±1°	UNIT: Inches/mm	SCALE: 2/1 SHEET: 2/2 REV: A DWG NO: LP09111030	