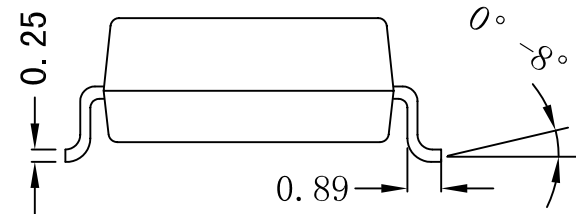
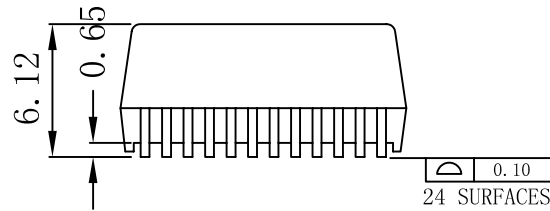
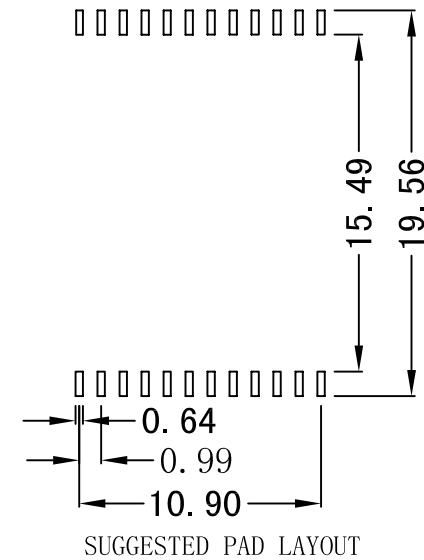
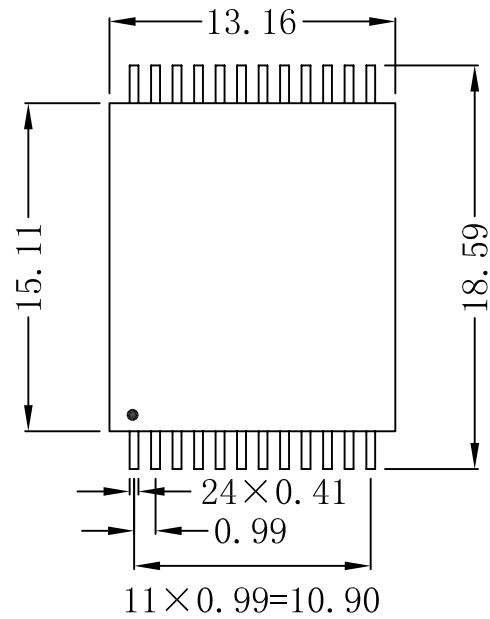


# Mechanical:

REV.	ECN NO.	DESCRIPTION	DATE	APPD
A	REL		2010/09/21	



## NOTES:

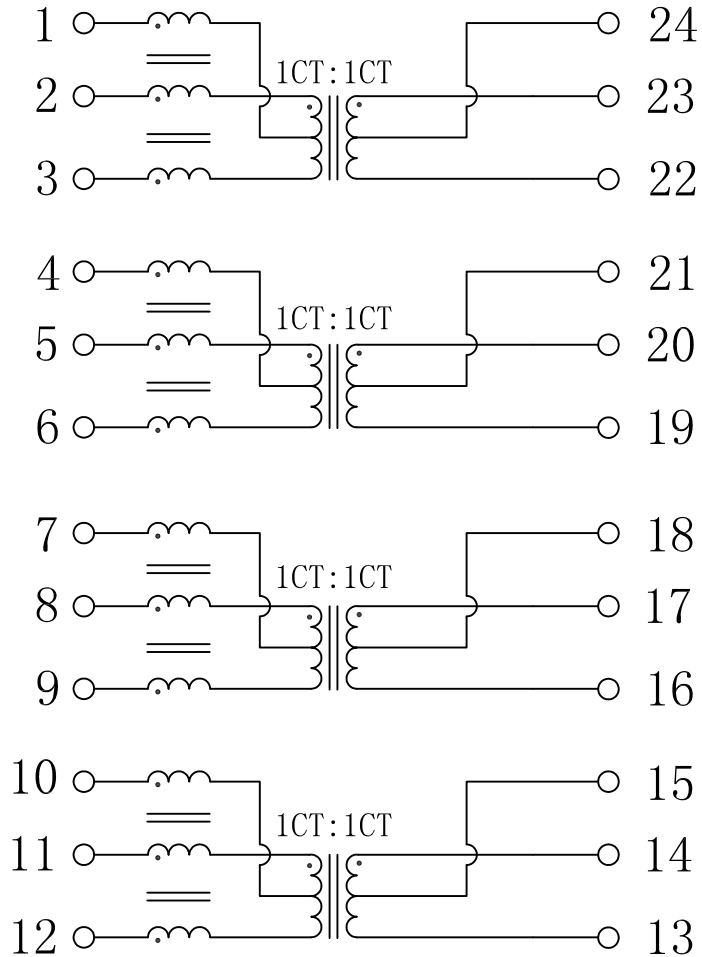
1. Meets IEEE 802.3 specification.
2. For RoHS part add suffix NL.
3. RoHS "NLE" peak solder rating 235°C.



X:X	±0.20	APPD:	LINK-PP INT'L TECHNOLOGY CO., LIMITED
X:XX	±0.10	CHKD:	
X:XXX	±0.05	DR: TOM	Title: Dual Port, PoE 1000Base-TX Transformer Magnetic Modules
ANGLES	±1°	UNIT: mm	PART NO.: LP82428NL
	SCALE: 2/1	SHEET: 1/2	REV: A DWG NO.: LP10092107

# Schematic:

REV.	ECN NO.	DESCRIPTION	DATE	APPD
A	REL		2010/09/21	



## Electrical Specifications @25°C

1. Turns Ratio: 1CT:1CT  $\pm 2\%$
2. OCL: 350uH min @100KHz, 0.1Vrms, 8mA
3. DCR: 1.0 $\Omega$  max
4. Isolation: 1500VAC 0.5mA 1Sec
5. Operating Temperature: 0~70°C.



X:X	$\pm 0.20$	APPD:	LINK-PP INT'L TECHNOLOGY CO., LIMITED	
X:XX	$\pm 0.10$	CHKD:		
X:XXX	$\pm 0.05$	DR: TOM	Title: Dual Port, PoE 1000Base-TX Transformer Magnetic Modules	
ANGLES	$\pm 1^\circ$	UNIT: mm	PART NO.: LP82428NL	
	SCALE: 2/1	SHEET: 2/2	REV: A	DWG NO.: LP10092107