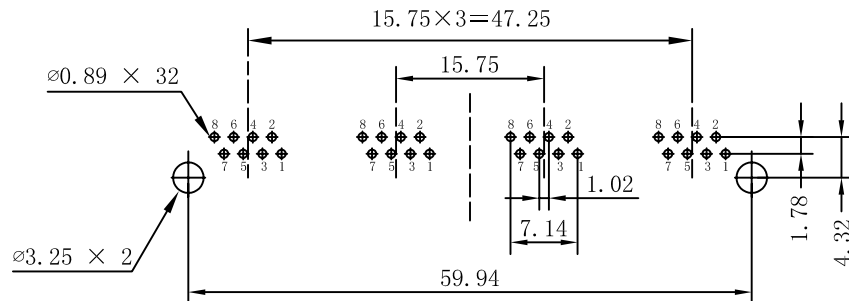
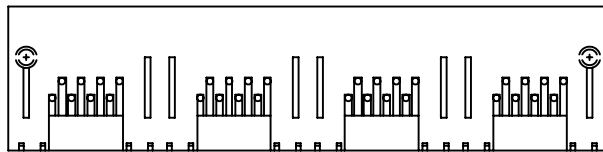
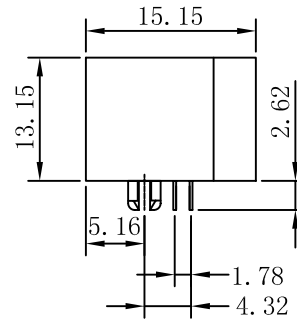
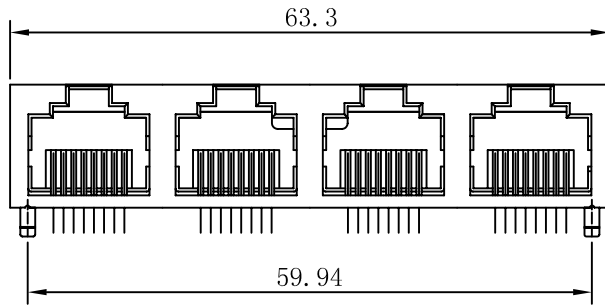


Mechanical:

REW.	ECN NO.	DESCRIPTION	DATE	APPD
A	REL		2010/06/12	



PC Board Layout (TOP VIEW)
Component Side Shown

NOTES:

MATERIAL:

- | | |
|---------------------|---|
| 1. HOUSING MATERIAL | : GLASS FILLED POLYESTER UL94V-0. |
| 2. CONTACT MATERIAL | : PHOSPHOR BRONZE \varnothing 0.46mm. |
| 3. PLATING | : GOLD PLATING OVER NICKEL. |
| 4. SHIELD | : 0.23mm THICKNESS COPPER ALLOY WITH NICKEL PLATED. |
| 5. LED | : OPTION |

ELECTRICAL:

- | | |
|---------------------------------------|-----------------------------|
| 1. VOLTAGE RATING | : 125VAC RMS. |
| 2. CURRENT RATING | : 1.5AMP. |
| 3. CONTACT RESISTANCE | : 30 MILLIOHMS MAX. |
| 4. INSULATION RESISTANCE | : 500MEGOHMS MIN @ 500V DC. |
| 5. DIELECTRIC WITHSTANDING RESISTANCE | : 1000V AC RMS 50Hz. 1MIN. |

MECHANICAL:

- | | |
|-----------------------------|-------------------|
| 1. DURRABILITY | : 750 CYCLES MIN. |
| 2. PCB RETENTION PRE-SOLDER | : 1LB MIN. |

GOLD PLATING:

- | | | | |
|-------------------------------------|--------------------------------|-------------------------------|------------------------------|
| GOLD FLASH <input type="checkbox"/> | 1.5U" <input type="checkbox"/> | 3U" <input type="checkbox"/> | 6U" <input type="checkbox"/> |
| 15U" <input type="checkbox"/> | 30U" <input type="checkbox"/> | 50U" <input type="checkbox"/> | |

ENVIRONMENTAL:

- | | |
|--------------|-------------------|
| 1. STORAGE | : -10°C TO +40°C. |
| 2. OPERATION | : -40°C TO +70°C. |



X:X ±0.20	APPD:	LINK-PP INT'L TECHNOLOGY CO., LIMITED		
X:XX ±0.10	CHKD:	Title: SIDE ENTRY PCB JACK WITH SHIELD 1×4		
X:XXX ±0.05	DR: C. H. Y	PART NO.: LPJE401NNL		
ANGLES ±1°	UNIT: mm			
	SCALE: 1/1	SHEET: 1/1	REV: A	DWG NO.: TRC10061201