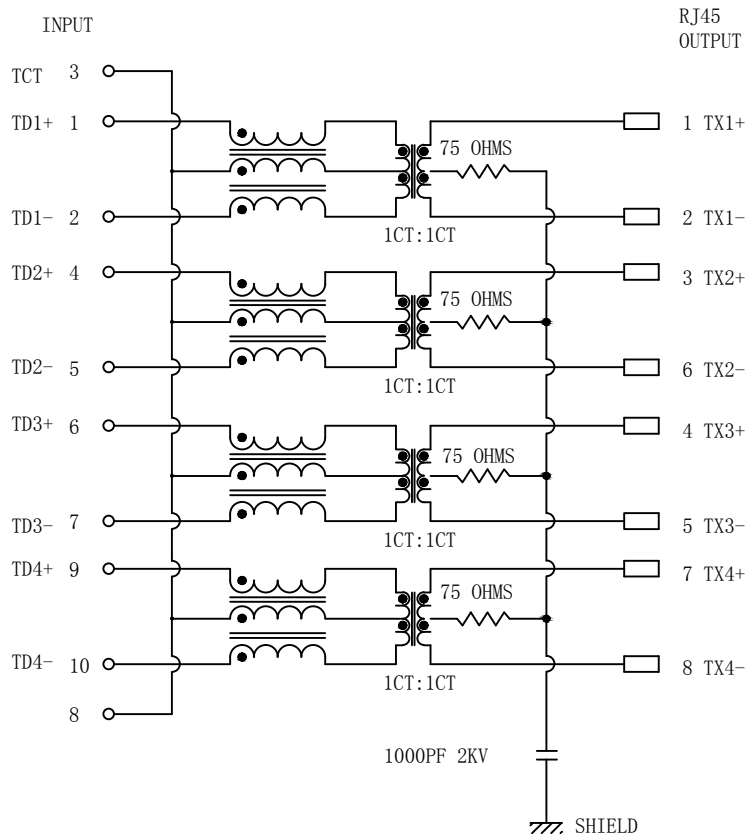


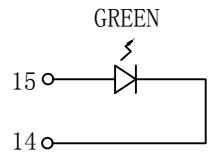
# Schematic:

REV.	ECN NO.	DESCRIPTION	DATE	APPD
A	REL		2016/07/17	



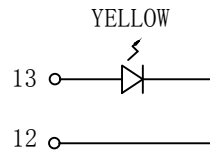
## Electrical Specification @25°C

1. OCL: 200uH Min  
@100KHz, 100mVrms, 8mA DC Bias
2. Turns Ratio: 1CT : 1CT
3. Insertion Loss:
  - 0.8dB MAX @ 1.0MHz TO 40MHz
  - 1.2dB MAX @ 40MHz TO 125MHz
  - 3.0dB MAX @ 125MHz TO 250MHz
4. Return Loss(dB Min):
  - 18dB MIN @ 1MHz TO 40MHz
  - 14dB MIN @ 40MHz TO 100MHz
  - 10dB MIN @ 100MHz TO 250MHz
5. Common Mode Rejection Ratio(CMRR):
  - 1~250MHz: -40dB Min
6. Hi-Pot: 1500Vrms @60Hz
7. Operating Temperature: 0°C ~ +70°C.



LEFT LED

LED POLARITY		COLOR
PIN 15	PIN 14	
+	-	GREEN



RIGHT LED

LED POLARITY		COLOR
PIN 13	PIN 12	
+	-	YELLOW

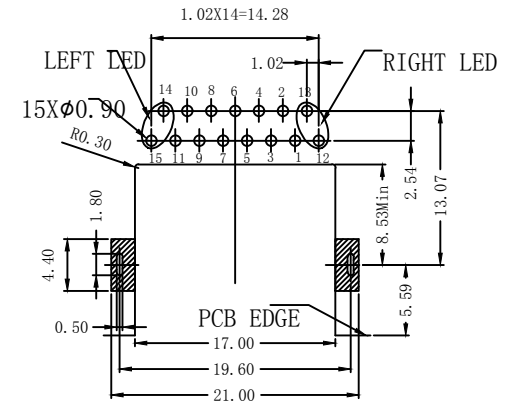
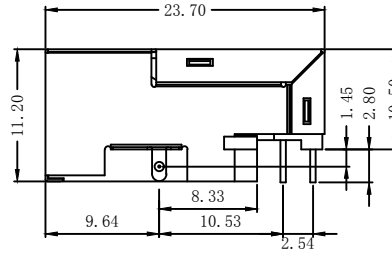
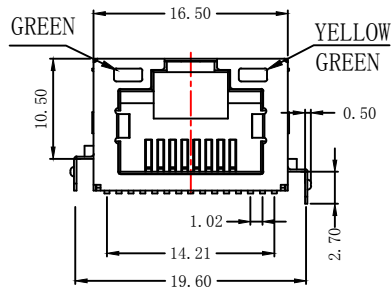


Emitting Color	$\lambda$ p(nm)	VF@IF=20mA	IR @VR=5V
GREEN	565	1.8~2.6V	10 $\mu$ A max
YELLOW	585	1.8~2.6V	10 $\mu$ A max

X:X	$\pm 0.30$	APPD:	LINK-PP INT'L TECHNOLOGY CO., LIMITED	
X:XX	$\pm 0.25$	CHKD:	TITLE: RJ45 Connector with 2.5G Base-TX Integrated Magnetics	
X:XXX	$\pm 0.05$	DR: James	PART NO.: LPJ5001BHNL	
ANGLES	$\pm 1^\circ$	UNIT: mm	DWG NO.: LP16071714	
	SCALE: 2/1	SHEET: 1/2	REV: A	

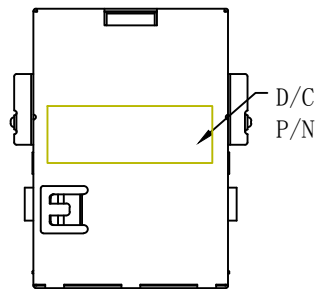
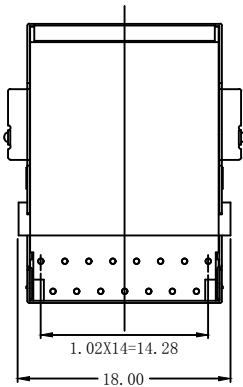
# Mechanical:

REV.	ECN NO.	DESCRIPTION	DATE	APPD
A	REL		2016/07/17	



RECOMMENDED PCB LAYOUT (TOP VIEW)

T=1.60 TOLERANCES: ±0.05



## NOTES:

1. Designed to support application, such as SOHO (ADSL modems), LAN-on-Motherboard (LOM), hub and Switches.
2. Meets IEEE 802.3 specification
3. Connector Materials:  
Housing: Thermoplastic UL94V-0  
Contact/Shield: Copper alloy  
Shield plating: Nickel  
Contact plating: Gold 6 micro-inches min. In contact area.
4. Wave solder tip temperature: 265°C Max, 5 Sec Max.
5. UL Certification: File Number E484635



X:X	±0.30	APPD:	LINK-PP INT'L TECHNOLOGY CO., LIMITED	
X:XX	±0.25	CHKD:	TITLE: RJ45 Connector with 2.5G Base-TX Integrated Magnetics	
X:XXX	±0.05	DR: James	PART NO.: LPJ5001BHNL	
ANGLES	±1°	UNIT: mm		
	SCALE: 2/1	SHEET: 2/2	REV: A	DWG NO.: LP16071714