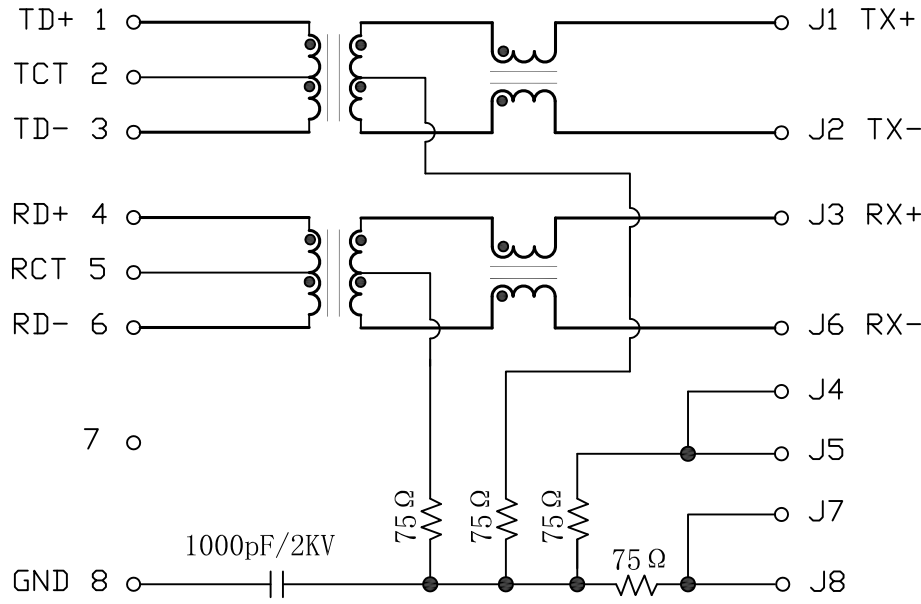


Schematic:

REV.	ECN NO.	DESCRIPTION	DATE	APPD
A	REL		2017-12-28	

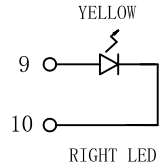
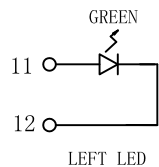
PC BOARD CONNECTIONS



RJ45 CONNECTOR

Electrical Specifications @25°C

- Turns Ratio ( $\pm 2\%$ ):  
TX=1CT:1CT      RX=1CT:1CT
- Inductance: 350uH MIN  
@100KHz, 100mVrms, 8mA DC bias
- Insertion Loss:  
1~100MHz:-1.0dB MAX
- Return Loss (dB MIN):  
1~30MHz:-18      30~60MHz:-15  
60~80MHz:-12      80~100MHz:-10
- Crosstalk:  
1~100MHz:-30dB MIN
- Common to Common Mode:  
1~100MHz:-30dB MIN
- Hipot: 1500Vrms
- Operating Temperature: 0°C ~70°C.



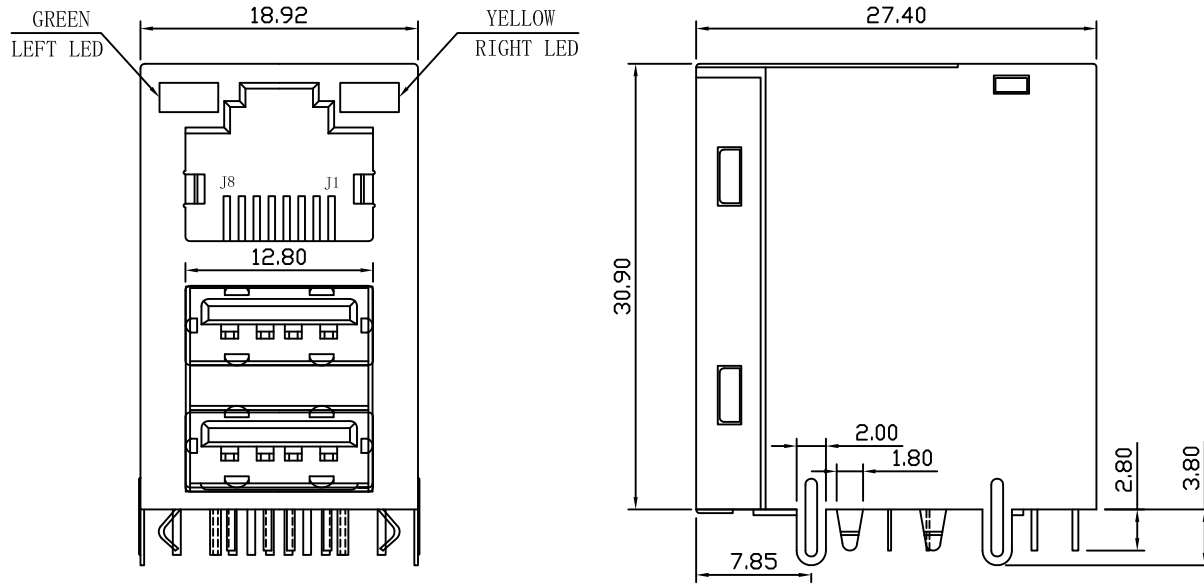
Emitting Color	$\lambda$ p(nm)	VF@IF=20mA	IR @VR=5V
GREEN	565	1.8~2.6V	10 $\mu$ A max
YELLOW	585	1.8~2.6V	10 $\mu$ A max



X:X	$\pm 0.30$	APPD:	LINK-PP INT'L TECHNOLOGY CO., LIMITED
X:XX	$\pm 0.25$	CHKD:	
X:XXX	$\pm 0.05$	DR: TOM	TITLE: RJ45 Connector with 10/100 Base-TX Jack/Dual USB Combo
ANGLES	$\pm 1^\circ$	UNIT: mm	PART NO.: LPJU5112BENL
	SCALE: 2/1	SHEET: 1/2	REV:      DWG NO.: LP17122801

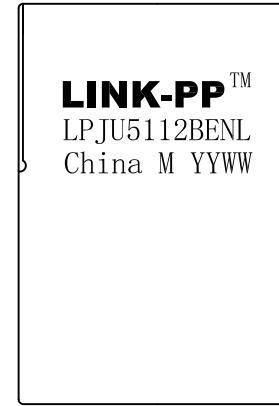
# Mechanical:

REV.	ECN NO.	DESCRIPTION	DATE	APPD
A	REL		2017-12-28	

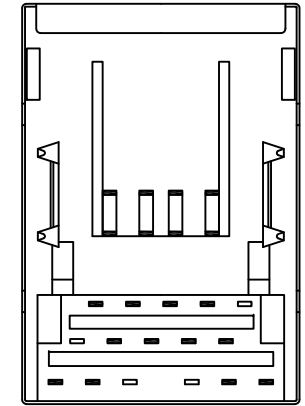


Front Side View

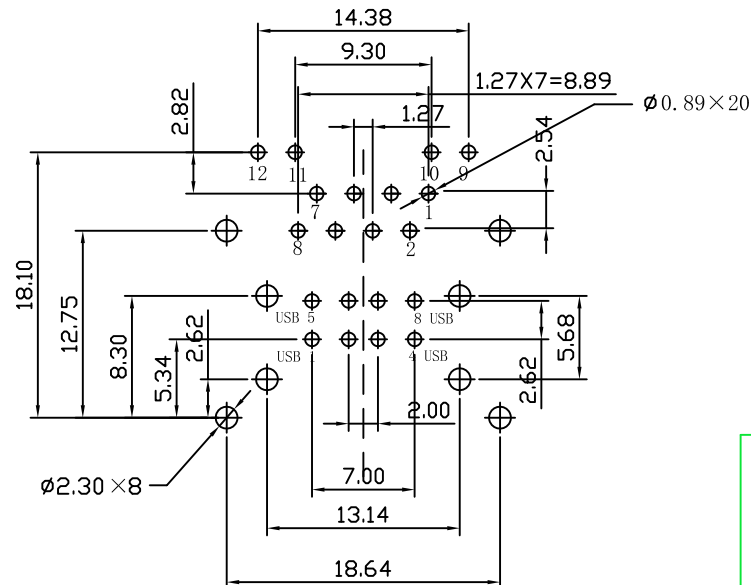
Left Side View



Top Side View



Bottom Side View



Suggested PCB Layout (Top View)



## NOTES:

1. Designed to support application, such as SOHO (ADSL modems), LAN-on-Motherboard (LOM), hub and Switches.
2. Meets IEEE 802.3 specification
3. Connector Materials:  
Housing: Thermoplastic PBT+30%G.F UL94V-0  
Contact: Phosphor Bronze C5210R-EH Thickness=0.35mm  
Pins: Brass C2680R-H Thickness=0.35mm  
Shield: SUS 201-1/2H Thickness=0.2mm  
Contact plating: Gold 6 micro-inches min. In contact area.  
USB plating: Gold Flash.
4. Wave solder tip temperature: 265°C Max, 5 Sec Max.
5. UL Certification: File Number E484635.

X:X	±0.30	APPD:	LINK-PP INT'L TECHNOLOGY CO., LIMITED
X:XX	±0.25	CHKD:	
X:XXX	±0.05	DR: TOM	TITLE: RJ45 Connector with 10/100 Base-TX Jack/Dual USB Combo
ANGLES	±1°	UNIT: mm	PART NO.: LPJU5112BENL
	SCALE: 2/1	SHEET: 2/2	REV: A DWG NO.: LP17122801