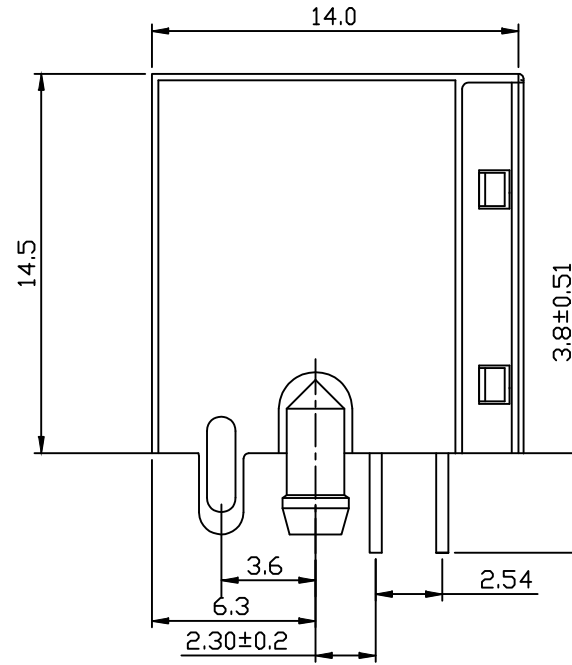
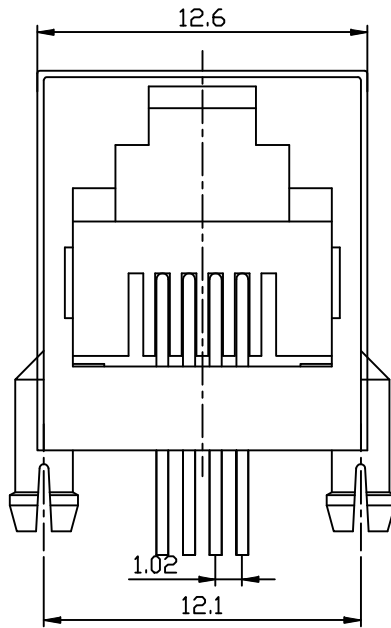


# Mechanical:

REV.	ECN NO.	DESCRIPTION	DATE	APPD
A	REL		2017/08/11	



### NOTES:

#### MATERIAL:

- 1.HOUSING MATERIAL :GLASS FILLED POLYESTER(UL94V-0).
- 2.CONTACT MATERIAL :PHOSPHOR BRONZE T=0.35mm.
- 3.PLATING :GOLD PLATING OVER NICKEL.
- 4.SHIELD,COPPER ALLOY 0.20mm THICKNESS PLATING NI.

#### ELECTRICAL:

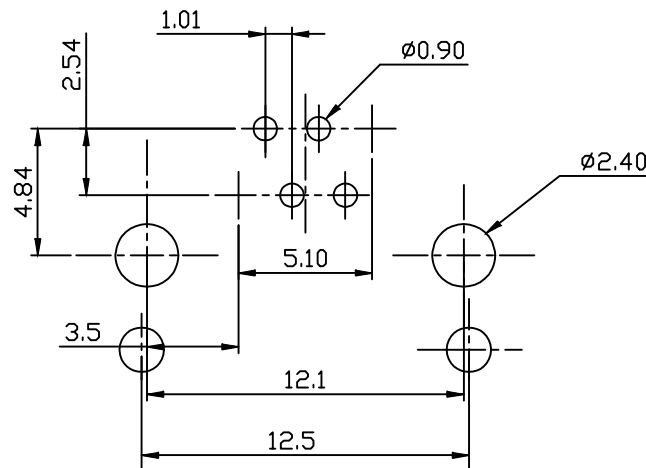
- 1.VOLTAGE RATING :125 VAC RMS.
- 2.CURRENT RATING :1.5 AMP.
- 3.CONTACT RESISTANCE :50 MILLIOHMS MAX.
- 4.INSULATION RESISTANCE :500 MEGOHMS MIN @ 500V DC.
- 5.DIELECTRIC WITHSTANDING RESISTANCE :1000V AC RMS 50Hz. 1MIN.

#### MECHANICAL:

- 1.DURRABILITY :750 CYCLES MIN.
- 2.PCB RETENTION PRE-SOLDER :1 LB MIN.

#### ENVIRONMENTAL:

- 1.STORAGE : -40°C TO +85°C.
2. OPERATION : 0°C TO 70°C.



PC Board Layout Component Side Shown

### LPJE712XDNL

Gold Plating	"X"
Gold Flash	0 <input type="checkbox"/>
1.5u"	1 <input type="checkbox"/>
3u"	2 <input type="checkbox"/>
6u"	3 <input type="checkbox"/>
15u"	4 <input type="checkbox"/>
30u"	5 <input type="checkbox"/>
50u"	6 <input type="checkbox"/>



X:X	±0.20	APPD:	LINK-PP INT'L TECHNOLOGY CO., LIMITED
X:XX	±0.10	CHKD:	
X:XXX	±0.05	DR: <b>James</b>	TITLE: <b>RJ11 1x1 CONNECTOR (6P 4C)</b>
ANGLES	±1°	UNIT: mm	PART NO.: <b>LPJE712XDNL</b>
	SCALE: 2/1	SHEET: 1/1	REV: A
			DWG NO.: <b>LP17081102</b>