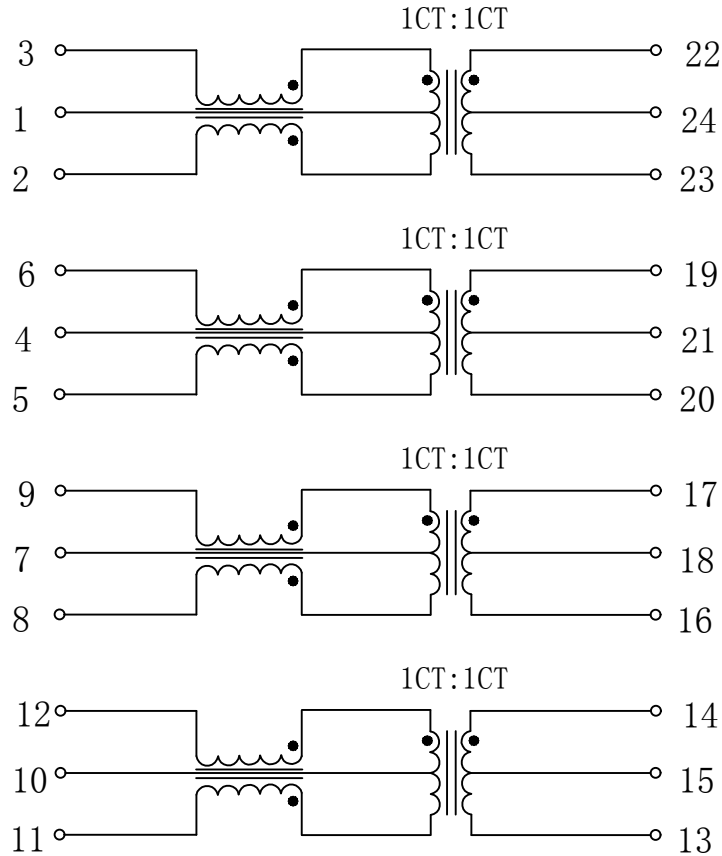


Schematic:

REV.	ECN NO.	DESCRIPTION	DATE	APPD
A	REL		2017/04/21	



Electrical Specifications @25°C

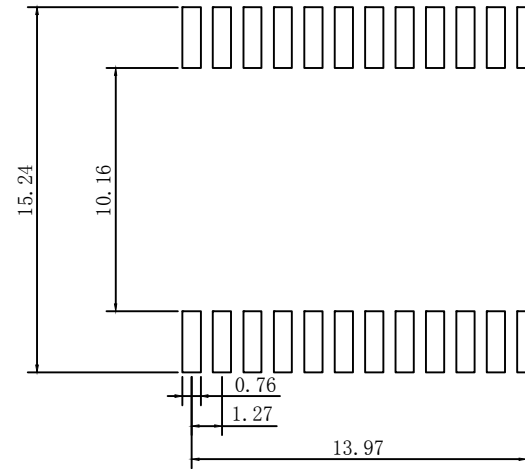
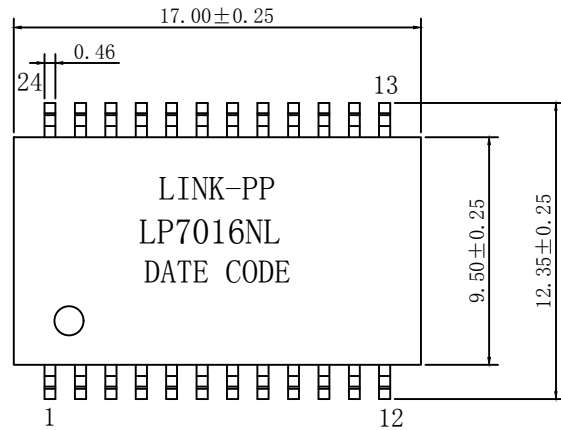
1. Turns Ratio: 1CT:1CT
2. Inductance OCL: 200uH Min @100KHz, 0.1V
3. Insertion Loss:
1-400MHz: -1.6dB Max
4. Return Loss:
1-40MHz: -18dB Min
40-500MHz: -18-10*LOG(f/40) dB Min
5. Crosstalk:
1-500MHz: -25dB Min
6. DCMR:
1-500MHz: -25dB Min
7. Isolation: 1500Vrms
8. Operating Temperature: 0°C ~ 70°C



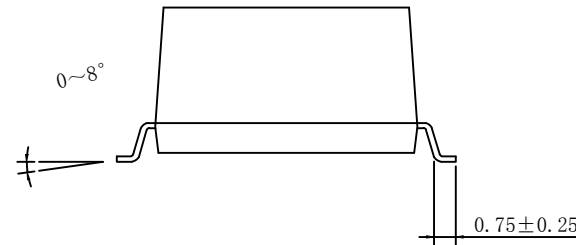
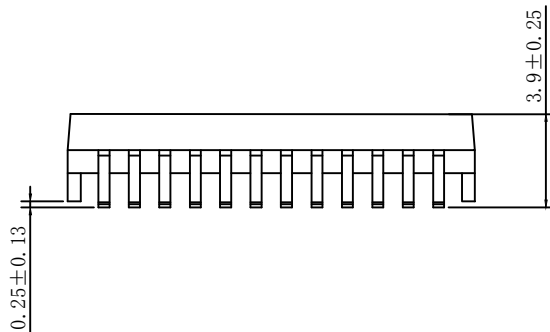
X:X	±0.25	APPD:	LINK-PP INT'L TECHNOLOGY CO., LIMITED	
X:XX	±0.10	CHKD:	TITLE:	
X:XXX	±0.05	DR: James	10GBase-T PC Card SMD Magnetic Modules	
ANGLES	±1°	UNIT: mm	PART NO.: LP7016NL	
	SCALE: 2/1	SHEET: 1/2	REV: A	DWG NO.: LP17042103

Mechanical:

REV.	ECN NO.	DESCRIPTION	DATE	APPD
A	REL		2017/04/21	



SUGGESTED PAD LAYOUT



NOTES:

1. 10GBase-T PC Card SMD Magnetic Modules
2. Designed to meet IEEE 802.3ae requirement
3. Lead-Free & Designed to meet RoHS requirement
4. Maximun reflow temperature is 250°C , 5 Sec.
5. UL Certification: File Number E484635.

Dimensions: mm

Unless otherwise specified, all tolerances are ± 0.25



X:X	± 0.25	APPD:	LINK-PP INT'L TECHNOLOGY CO., LIMITED
X:XX	± 0.10	CHKD:	
X:XXX	± 0.05	DR: James	TITLE: 10GBase-T PC Card SMD Magnetic Modules
ANGLES	$\pm 1^\circ$	UNIT: mm/Inch	PART NO. : LP7016NL
	SCALE: 2/1	SHEET: 2/2	REV: A DWG NO. : LP17042103