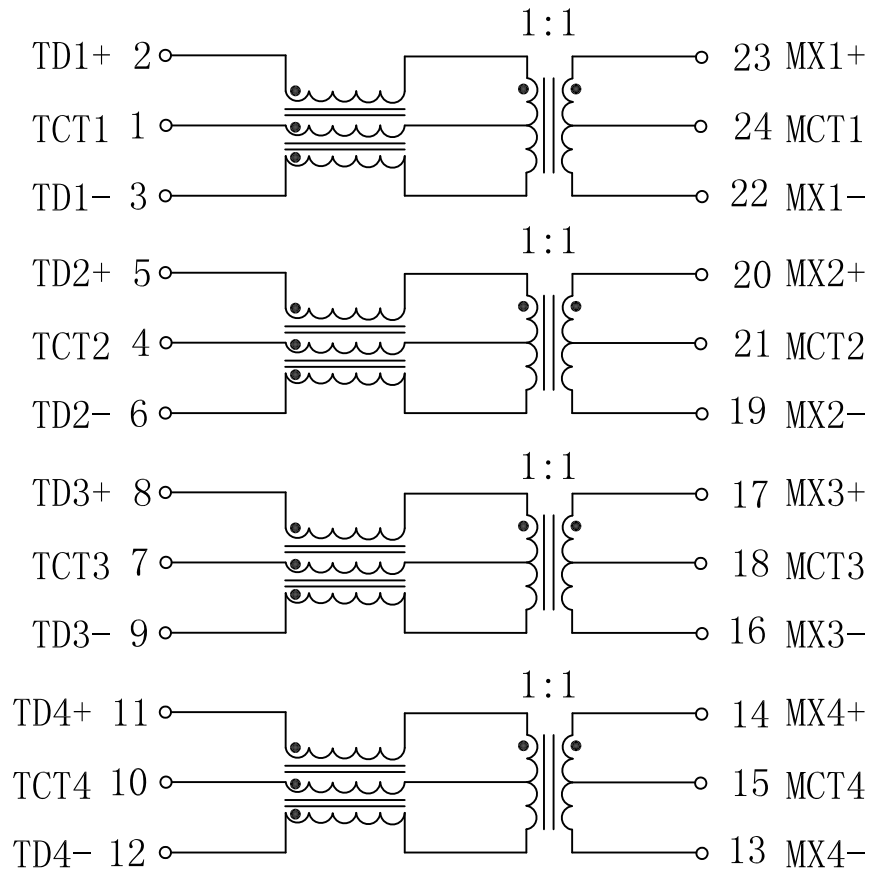


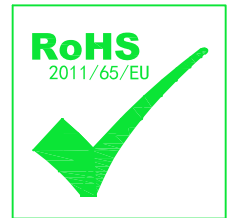
# Schematic:

REV.	ECN NO.	DESCRIPTION	DATE	APPD
A	REL		2015-6-9	



## ELECTRICAL SPECIFICATIONS @25°C

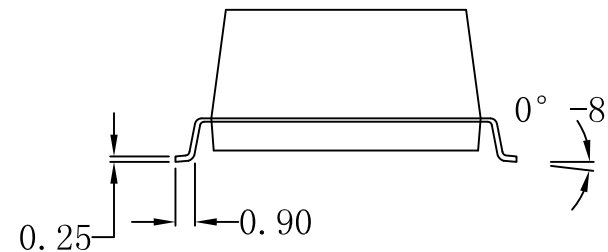
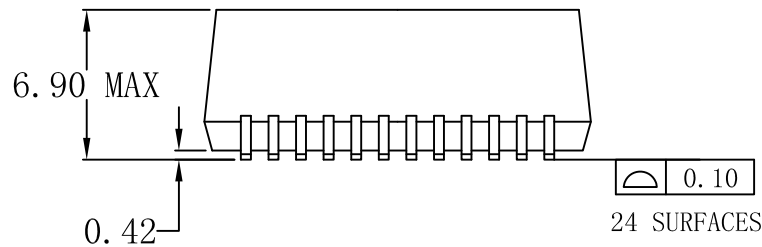
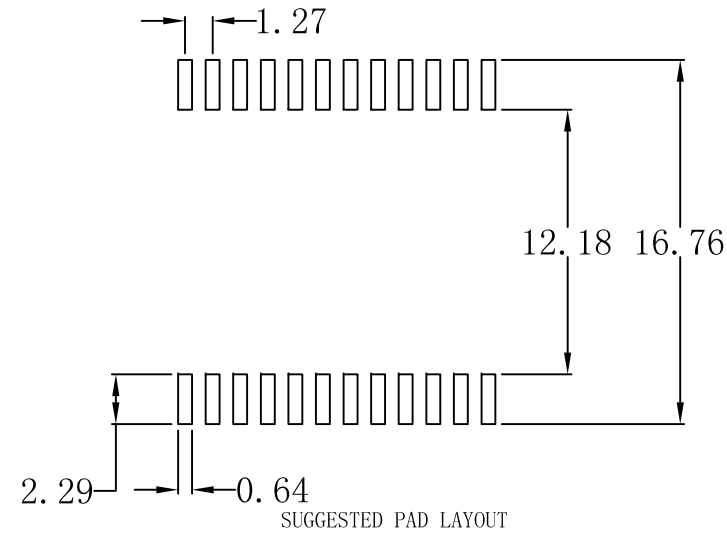
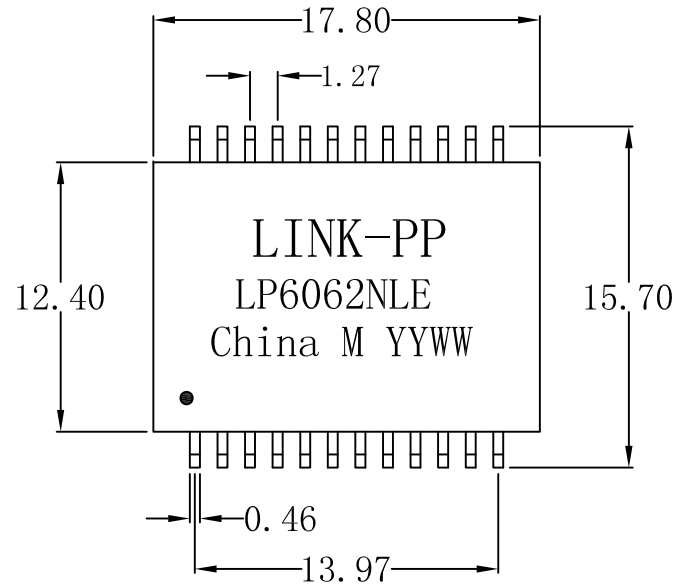
- Turn Ratio ( $\pm 3\%$ ):  
Pri:Sec = 1CT:1CT
- Inductance OCL: 350uH MIN  
@100KHz 0.1V 8mA DC Bias
- Insertion Loss:  
-1.1dB MAX @ 1-100MHz
- Return Loss:  
-16dB MIN @ 1-30MHz  
-12dB MIN @ 30-60MHz  
-10dB MIN @ 60-100MHz
- Cross talk:  
-40dB MIN @ 1-30MHz  
-35dB MIN @ 30-60MHz  
-30dB MIN @ 60-100MHz
- Common Mode Rejection:  
-30dB MIN @ 1-50MHz  
-20dB MIN @ 50-150MHz
- Balanced DC Line current:  
350mA MAX @ 48V DC Continuous.
- Hipot Test: 1500Vrms
- Operating Temperature Range: 0°C TO 70°C



X:X	APPD:	LINK-PP INT'L TECHNOLOGY CO., LIMITED		
X:XX ±0.25	CHKD:	1000Base-T Single Port Transformer Modules For PoE Application		
X:XXX	DR: TOM	PART NO.: LP6062NLE		
ANGLES ±1°	UNIT: mm	DWG NO.: LP12042610		
	SCALE: 2/1	SHEET: 1/2	REV: A	

# Mechanical :

REV.	ECN NO.	DESCRIPTION	DATE	APPD
A	REL		2015-6-9	



## NOTES:

1. Designed to support application, such as SOHO (ADSL modems), LAN-on-Motherboard (LOM), hub and Switches.
2. Meets IEEE 802.3af specification.
3. Maximum reflow temperature is 245°C, 5 Sec.

X:X	APPD:	LINK-PP INT'L TECHNOLOGY CO., LIMITED		
X:XX ±0.25	CHKD:	TITLE: 1000Base-T Single Port Transformer Modules For PoE Application		
X:XXX	DR: TOM	PART NO.: LP6062NLE		
ANGLES ±1°	UNIT: mm			
	SCALE: 2/1	SHEET: 2/2	REV: A	DWG NO.: LP12042610